

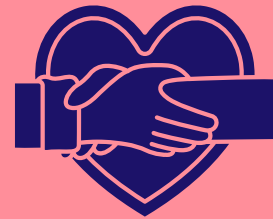
L'Arche Values: **INCLUSION**

**We are committed
to the dignity of
every person.**

L'Arche Charter, 2.1

PRACTICE

- ✓ Listen first
- ✓ Create access
- ✓ Learn from mistakes
- ✓ Ask before helping
- ✓ Speak with care
- ✓ Foster belonging
- ✓ Check in person-to-person



TAKE ACTION

**SPEAK
UP!**



**Interrupt
exclusion,
discrimination,
or bias—even in
small ways.**

REFLECT



*"Exclusion is derived from fear,
ignorance, and power, whilst
inclusion is derived from love,
compassion, and respect."*

- Michelle Emson